

**UNITED EVANGELICAL LUTHERAN CHURCHES IN INDIA  
(UELCI)  
INTEGRATED RURAL DEVELOPMENT OF WEAKER SECTIONS IN INDIA  
(IRDWSI)**

**ORISSA DROUGHT - 2002**

**ACT Appeal No. ASIN 24**

**INTERIM REPORT**

**FOR THE PERIOD 01<sup>ST</sup> OCTOBER 2002 TO 31<sup>ST</sup> MARCH 2003**

**Submitted to**

**ACT, Geneva**

---

**UELCI Emergency Co-ordination Office**

Flat No. 503, Revathi Hills, B. S. Layout. Seethammadhara, Visakhapatnam – 530013, Andhra Pradesh, India  
Phone/Fax : 00 91 891 2724602, E.Mail: wstan@vsnl.com

**IRDWSI / UELCI – ACT  
Act Appeal for - Orissa Drought 2002**

**INTERIM REPORT  
FOR THE PERIOD 01<sup>ST</sup> NOVEMBER 2002 TO 31<sup>ST</sup> MARCH 2003  
ACT APPEAL NUMBER: ASIN - 24**

## **1. BACKGROUND**

After the Super Cyclone in 1999, severe Drought in 2000, unprecedented Floods in 2001; Orissa State has been passing through another severe drought this year. Due to long monsoon breaks, continuous dry spell and sporadic rainfall has badly affected the Kharif (autumn and winter) crops. All the 30 Districts of the state have been affected damaging around 70% of crops. The Government of Orissa have declared 5857 out of total 6234 Gram Panchayats as drought-hit.

Some of the Experts and older people opine that it is the first time, after the Great Famine occurred in 1866, that the drought hit Orissa with such a magnitude, which is affecting nearly 35 million people. Adivasis, Dalits and landless agricultural labourers are the worst victims, whose population constitutes about 70% of total state's population.

The situation in Adivasi and hilly areas has become worse to the worst. 80 - 100% damage to their crops and non-availability of occupation and employment in agriculture, the people were forced to migrate to other States and urban areas in search for employment and food for their survival. Due to shortage of safe water, the epidemic (diarrhoea etc.) broke in some of the Districts (like Ganjam, Gajapati & Kandhamal) in Southern and Western parts of Orissa killing more than 40 persons.

### **Rapid Assessment of Drought**

The unusual behaviour of monsoon, demands of the people from operational villages, newspapers reports etc. made UELCI to call a special meeting of its local partners on 25<sup>th</sup> July 2002 and sent Fact Finding Teams to various parts of Orissa during 2<sup>nd</sup> Aug to 6<sup>th</sup> August 2002 to study the field situation more objectively. The Teams consisting of social scientists, agriculturists and journalists had observed that the drought situation in different areas of the state is critical. The overall observations of the teams are;

- In an average the entire Kharif cultivation of Orissa has been affected with drought due to scanty and erratic rainfall of this year.
- The plants have started shrivelling and drying
- The stunted growth of plants
- Fewer areas covered under paddy cultivation against the normalcy
- The farmers are running out of seed stock
- The vulnerable sections are running out of food
- Less irrigation facilities available
- Substantial reduction in ground water resulting in drinking water scarcity
- Adverse effect on economic condition of farmers with reduced purchasing power and inability to pay the cost of required inputs for winter cultivation.
- Lacking scope of employment
- Increasing rate of migration
- No government action yet been taken to minimise the drought situation (till the date of visit)

On the basis of reports of the Teams, the UELCI partners made Appeals to ACT provide emergency relief to drought affected communities.

### **1.1. IMPLEMENTING ACT MEMBER AND PARTNER INFORMATION**

#### **Description of ACT Member**

United Evangelical Lutheran Churches in India (UELCI), Chennai, Tamilnadu, is an umbrella organisation of all the 10 Lutheran Churches in India. Integrated Rural Development of Weaker Sections of India (IRDWSI), Semiliguda, Koraput District, Orissa is a project of Divisional Social

Action of UELCI. IRDWSI project has been working with other NGOs who are part of the Network called Orissa Development Action Forum (ODAF).

### Description of ACT Member's Implementing Partners

IRDWSI of UELCI is the project applicant and it implements the activities through its network partners of Orissa Development Action Forum (ODAF). IRDWSI works with the following partners;

- Seva Bharati (SB)
- Council of Professional Social Workers (CPSW)
- Peoples Institute for Participatory Action Research (PIPAR)
- Antyodaya Chetana Mandal (ACM)
- Socio Economic Development Programme (SEDP)
- Tagore Society for Rural Development (TSRD) and
- Rural Action for Development (RAD) and
- Samajika Vikasa Kendram (SVK)

These organisations were part of the earlier Orissa Cyclone Relief and Rehabilitation Programme (ASIN 95) and Orissa Flood Crisis and Post Crisis Operations (ASIN12 & ASIN 13) supported by ACT Geneva.

## 1.2. DESCRIPTION OF THE EMERGENCY SITUATION

### Overall Situation

#### Lowest Rainfall in last 40 years:

The state could receive only 140.14 mm of rainfall in place of 351.60 mm. in the months of June and July, the prime period for agricultural operations, which is 39.93% deficient from the normal rainfall. Unusually, two long dry-spells during 25<sup>th</sup> June to 15<sup>th</sup> July and 18<sup>th</sup> to 29<sup>th</sup> July, not only affected all agricultural activities, but also resulted in depletion of surface water and substantial lowering down the accumulation of water in tanks, reservoirs, major/minor irrigation projects etc.

Agriculturists and Meteorologists in the State are of opinion that there should be 351.60 mm. rainfall, normally with at least 20 rainy days in the month of July. If breaks occur in this month, it would seriously affect the agriculture. Unfortunately it gave only 140.14mm. rainfall with 5 rainy days.

A comparative statement of rainfall in July during the drought-affected years in the selected area of intervention is given below;

Sl.	District	Normal Rainfall	Actual Rainfall 1996	Actual Rainfall 2000	Actual Rainfall 2002
1	Mayurbhanj	426.40	268.50	256.70	114.30
2	Dhenkanal	382.00	234.60	223.60	150.09
3	Angul	382.40	225.10	223.70	66.76
4	Nayagarh	310.80	144.00	271.60	126.07
5	Kalahandi	343.50	365.20	442.90	121.08
6	Koraput	351.10	411.60	302.50	224.51
<b>Average:</b>		<b>351.60</b>	<b>252.30</b>	<b>249.10</b>	<b>140.14</b>

To account the rainfall for the period June to September, 2002, there has been almost 40% deviation from normalcy.

During the visit of the Fact-Finding Team, it was observed that the marginal farmers, sharecroppers, agricultural labourers and small farmers have started selling/mortgaging their belongings like cattle, assets, land, etc, at lower price.

The consequence of this sale shall be more precarious, since the marginal farmers, small farmers and share croppers would not be left with for ploughing for next crop and their miseries would be multiplied.

The landless labourers, sharecroppers, marginal farmers and small farmers did not have any work in agriculture sector, as the agricultural operations stopped due to scanty rainfall. The situation of these people is alarming, as they have no scope of any employment and running out of foodstuff. In some of Districts of Orissa, the most of the land-less labourers and other weaker sections have already migrated to urban areas. The rate of migration is more than previous years. In areas, where some relief works (particularly Food for works) are being undertaken, labour migrations could be checked to some extent.

## **Description of Damages**

### **Crop Damage above 70%**

#### **Crop Condition:**

The scanty and quite inadequate rainfall in July has caused stoppage of agricultural operations in the state. It appears that the rainy season, in fact, has become an extended part of summer season. Due to long dry spell, moisture stress condition had developed in cultivable lands. Direct sowing although completed in many Districts by the end of June, transplantation could not be taken up for want of water in the fields.

The germination of seeds sown in uplands was affected due to moisture stress. Broadcasted paddy crops in high lands and the seedlings raised in nursery beds had started wilting due to scarcity of water. Inter-cultural activities like "Beushaning"(de-weeding etc.) and Transplantation could not be taken up due to lack of sufficient water in the fields.

Unexpectedly the temperature also had risen due to clear sky and less rainfall during this period and which has resulted in evaporative loss of water from the paddy fields. High temperature has accelerated the water loss from the soil.

Low soil moisture supply to the plants on one hand and high transpiration loss from the crop have adversely affected the crop condition, particularly the paddy crop, whose water requirement is generally high. The scenario has led to a serious apprehension that another calamity in shape of severe drought is impending and looming large over the state.

#### **Crop Position of the Districts:**

Feedbacks show the following impact of scanty rainfall on the crop coverage & conditions in the state.

- a) The cultivable area of the state is 50.55 lakh hectares and normal coverage for kharif paddy till July end is 29.77 lakh hectares;
- b) Scanty & sporadic rainfall this year has reduced the coverage to 22.35 lakh, which is 25% less than the normal operation till July, and 56% less than the total cultivable land.
- c) Due to continuous dry spell & quite inadequate water in the field nearly 8.77 lakh hectares of land has been remaining fallow till July resulting in 100% crop loss in respect of these lands.
- d) Further, out of 20.97 lakh direct sown, "gajamarudi" has occurred in 1.40 lakh hectares & Beushaning could not be done in respect of 13.73 lakh hectares of land. Plant growth & sustenance in rest of the direct sown land is very much doubtful.
- e) The paddy nurseries were grown in an area of 1.40 lakh hectares of land. Out of this 0.76 lakh hectares have been severely affected due to such scanty rainfall & continuous dry spell. The entire area of 7.56 lakh hectares of land, which have been waiting for transplantation, will remain fallow for want of seedlings.
- f) So out of the total area of 29.77 lakh hectares of land, normally covered under various kharif crops up to July, an area of 20.79 lakh hectare of land have been seriously affected and there will be crop loss of more than 65% average (Ranging from 52% to 94%) in these areas.
- g) Drought situation has arisen in all the 30 Districts of the state and in Districts such as, Khordha, Koraput, Bargarh, Sambalpur and Sonapur have been partly affected as per the feedback.

(Quoted from the Memorandum on Drought submitted by the Govt of Orissa to Govt. of India)

## Food Insecurity and Malnutrition

Generally the land less labourers, sharecroppers, rural artisans, marginal farmers and small farmers are more affected in the context of natural calamity. They don't have much foodstuff to sustain for some period. About 67 lakhs of such people and their children would suffer.

The most vulnerable people like distressed old persons, women, children with negligible social and economic security are going to face starvation like situation from October onwards, whose number would not be less than 10 lakh. People started running out off foodstuff.

Starvation and malnutrition might lead to a number of diseases and death. The situation would be more precarious in the following months. It is not uncommon in the some of Adivasi areas of Orissa state that the mother sells her son/daughter for a bowl of rice, which had created a hue and cry situation in the country in the previous years.

## No Sufficient Safe Drinking Water

The scarcity of drinking water and food insecurity lead to water borne disease like skin diseases, fever, gastro-intestinal problems like diarrhoea, dysentery, etc. In some of the Districts of Orissa (Kandhamal, Koraput, Kalahandi etc.) the epidemic started due to non-availability of sufficient and safe drinking water and it is reported that 40 people have already died of diarrhoea (*Source: The Samaj dated 23<sup>rd</sup> August'2002*). The difficulties in tribal and hilly areas are more.

## Disaster and Emergency Statistics

Sl.	Type of Loss	Affected area in Lakh Hectares	Anticipated % of Loss	Anticipated Loss of production (In Lakh Tons)
1	Fallow Lands	7.73	100	13.35
2	Area affected by Gajamurudi	0.85	100	1.54
3	Area where no beaushana has been done	19.22	60	19.85
4	Area transplanted but subject to moisture stress	0.34	60	0.38
5	Beaushana done but subject to moisture stress	0.32	50	0.30
	<b>Total</b>	<b>28.46</b>		<b>35.42</b>

*Gajamurudi: Drying at seedling stage – Nursery Level*

*Beaushana: Weeding not done due to Moisture Stress*

*Source: The Memorandum on Orissa Drought, 2002 submitted by Government of Orissa to Government of India*

## Loss of Human days

As per Government Reports 103 million and 315 million as per the estimation of Fact-Finding Team. (Total number of agricultural work force in Orissa is 6.7 million out of which 3.5 million labourers lost 90 workdays – 45 days during cultivation and 45 days during harvesting)

## Health Hazards

In August and September, 2002 it was reported in local news papers that it caused deaths due to diahorrea 40 people, deaths due to malnutrition 10 people. Such reports are coming in the regular intervals, although not confirmed officially, reports about starvation deaths is appearing.

### 1.3. CURRENT SITUATION IN OPERATIONAL AREAS

#### North Orissa

**Kaptipada Area:** Kaptipada Block is another drought-affected Block of Mayurbhanj District and particularly the interior areas are mostly affected. This year also the area experienced severe drought situation and a great loss to the standing crops. More than 75% of the crops were damaged in Sarat region of the Block. The immediate threat was the survival of the Adivasi communities. Old age people, children and women are the major victims of the drought and the situation of malnutrition is increasing. Other problem likes scarcity of drinking water, shortage of fodder for the livestock etc. were also felt in the area.

**Kamakshya Nagar Area :** A cross-dam in the area is generally used to irrigate 25% of lands, did not have sufficient water this year. About 98% of their crops got damaged. Little support by govt during 1<sup>st</sup> week of August to replant crop seedlings (paddy is the major crop & staple food in the entire District) could not be even used due to non-availability of water. As a result, total loss of crop and further loss of work in the agricultural sector.

The labourer and the poor somehow managed to arrange food till the last of October. In the adjacent villages a number of families have already left their villages. From one of our proposed villages, 90% of the male members have migrated in search of work. In two proposed villages, due to continuous counselling, mobilisation and implementation of food for work programme, migration could be checked to some extent and all the families have been able to get food as well as store food for at least one more month.

**Pallahara Area:** Due to the failure of Kharif season, the people have no alternative to earn their livelihood. The people are left with only little seeds and other resources for the next cultivation. The ground water level is going down causing acute scarcity of drinking water. The situation is worsening day by day. Due to non-availability of work, food insecurity, no drinking water, 60% of the people have migrated. Migration was checked in two proposed villages through food for work programme. The children and the people are malnourishment and partial starvation exists.

**Parjanga Area:** In two villages there is 142 Acres of cultivable land out of which 89 Acres are upland, 24 Acres medium land, 16 Acres Hilly land and only 13 Acres are low land and the cultivation is completely depend on rain. Due to extreme low rain fall last year the entire area lost 98% of the crops. A number of families belonging to neighbouring villages have migrated to nearby towns like Talcher and Angul in search of work. As we started the food for work programme in the proposed villages all the families were able to get employment and their food has been secured for the next 30-45 days to come and it prevented migration.

#### Central Orissa

**Khandapara Area:** Approximately 90% crops are lost, paddy 100%, maize 40% and ragi 80%. Ground water levels have decreased; most of the water harvesting structures and ponds are dried out. There is no alternative source of irrigation except to depend on the vagaries of monsoon. 8 persons from Hatiapali, 15 from Bhramarbarprasad and 43 from Binjhapali villages who had migrated returned after the food for work intervention. Almost 40% of the people had migrated to other places to eke out a livelihood.

After the Khariff season the level of residual moistures was very low and was inadequate to undertake any crops such as pulses and vegetables. This was also mainly due to the lack of irrigation facilities. Their main source of livelihood is agriculture. Most of the households are small and marginal farmers and landless agricultural labourers. Since last five years, this area has been affected severely by Super Cyclone in 1999; Drought in 2000, Floods in 2001 and the recent drought in 2002 and this has shaken the agricultural economy and the community.

There is large-scale unemployment, which has led to migration to the nearby towns and outside the state. There is less chance of getting employment because labourers are coming from different parts of the state to these towns for work. The education of the children is also suffering.

To check migration and to provide earning opportunities and immediate food security to the vulnerable sections, Food for Work activities were initiated in the operational villages, which has helped the families to stay back in the villages. The most vulnerable sections, such as the destitute, widows, aged, disabled and diseased persons are the most sufferers. The people are leaving the cattle in the forest for free grazing.

**Gania Area :** Gania Block of Nayagarh District is one of the most affected areas where more than 40% of the population had already migrated. The three villages selected food for work activities are among the worst drought affected villages. People are in need of employment opportunities and all the agricultural operations have come to a stand still. Scarcity of drinking water and lack of food is forcing the landless and the marginal farmers of the area to migrate to distant places like Bhubaneswar. Migration is the only option left out for the agricultural labourers and marginal farmers.

### **South Orissa**

**Bandhugaon Area:** This year due to drought situation the crops yielded very poorly. Water dried up in the locality and due to non-availability of labour work in agricultural sector, it resulted in shortage of food. If the situation persists it may lead starvation deaths.

**Kalahandi Area:** Water Harvesting Structures and Ponds are becoming dry. Apart from the villages, where we are currently working, most of the people from other villages are migrating outside the state in large numbers. Most of them have lost the capacity to invest further for the next cultivation season.

## **1.4. PROJECT GOAL AND OBJECTIVES**

### **Project Goal**

The main goal is to create wage-earning opportunities for the poor and the landless through food for work, help the small and marginal farm families to revive their agriculture and prevent the most vulnerable persons from starvation during the acute crisis period till the next harvesting period.

### **Objectives**

- To generate employment opportunities through Food for Work Programme
- To provide agricultural support through seeds, manure and irrigation facilities
- To provide safe drinking water through repair/construction of dug wells, tube wells and spring protection wells.
- To undertake health care activities
- To address issues related to drought and relief through advocacy
- To undertake capacity building programme for the staff, volunteers and communities
- To co-ordinate with other developmental agencies and Government departments

## **1.5. TIME FRAME OF THE PROGRAMME**

October 2002 to September 2003.

The present Reporting period is from October 2002 to March 2003.

## **1.6. STATUS OF THE CURRENT PHASE IMPLEMENTATION**

In some selected villages food for work programme is continuing. This programme enabled to provide food security to needy families for at least 2-months. In 3 villages two dug wells and one spring protection well for drinking water were constructed.

Health Camps are being organised and treatment of patients is going on. Under food for work programme, five irrigation structures were planned and out of five, one was constructed and the rest four are under construction.

Discussions are going on with the community members, volunteers, staffs and experts to work out a long-term proposal to address Disaster preparedness. Under Capacity Building Programme Training of Trainers on Community Based Disaster Management was organised at Bhubaneswar in

collaboration with Indian Red Cross Society and ODAF. This programme was for seven days and 32 participants drawn from NGOs and communities attended.

With the available resources from ACT, the prioritised programmes were under taken in 27 villages. The details of the activities are attached to this report, **see Annexure – 1.**

## 2. GEOGRAPHIC LOCATION OF THE PROGRAMME

### 2.1. Locations of Proposed Response

Sl.	District	Block	GP	Village	Families
1	Mayurbhanj	Kaptipada	Saradiha, Sarat	11	541
2	Dhenkanal	Kamakhyanager	Tumusinga	4	546
		Parajanga	Muktapasi, Jayapurakateni, Kankadasoda	5	304
3	Angul	Pallahara	Khemela, Badasada	6	355
4	Nayagarh	Gania	Gania, Kishoreprasad, Karadapada Chhamundia	20	2212
		Khandapara	Sidhamula, Banapur	7	806
5	Kalahandi	Narla	Gadbandha	7	647
6	Koraput	Bandhugaon	Alamanda, Bandhugaon	9	504
<b>Total</b>	<b>6 Districts</b>	<b>8 Blocks</b>	<b>17</b>	<b>69</b>	<b>5915</b>

### 2.2. Locations of Current Response

Sl.	District	Block	Gram Panchayat	Village	Families	Distance from State Capital in Kms
1	Mayurbhanj	Kaptipada	Sarat	4	218	300
2	Dhenkanal	Kamakhyanager	Tumusinga	2	255	80
		Parajanga	Kankadasoda	2	171	120
4	Angul	Pallahara	Khemela	2	116	160
5	Nayagarh	Gania	Kishoreprasad	4	456	100
			Chhamundia	3	228	95
		Khandapara	Sidhamula, Banapur	5	246	85 88
8	Kalahandi	Narla	Gadbandha	2	145	450
9	Koraput	Bandhugaon	Alamanda	3	174	550
<b>Total</b>	<b>6 Districts</b>	<b>8 Blocks</b>	<b>10</b>	<b>27</b>	<b>2009</b>	

## 3. ACTIVITIES UNDERTAKEN: DESCRIPTION OF ASSISTANCE

### 3.1. Relief Food Distribution - Food for Work

Considering the gravity of the situation and the starvation, it was decided to undertake Food for Work programme on a priority basis keeping the fund- availability in view.

The objective of the programme is to generate employment, so that it can ensure the food security till the next harvest. It was planned that through the food for work programme to create community infrastructures as per the need of the community and as drought proofing measures.

As of March 2003, 49285 human days were created to provide employment to 1705 families of 27 villages. Another 17,000 human days will be generated by the end of April 2003. It was proposed to provide 3 Kg. of rice, 0.5 Kg. of Dal and Rs. 10/- as cash for one days' work per person. It was ensured that at least one person from each family should be covered under food for work programme. Following activities has been undertaken during the reporting period.

#### Details of Food For Work

Blocks	GPs covered	No. of villages covered	No. of Families covered	Human day: created	Quantity of support for Human day
Kaptipada	Sarat	4	218	6700	Rice – 3kg, Dal - 0.5 Kg. Cash-Rs. 10/- Cost = Rs.40/-
Kamakshya -nagar	Tumusinga	2	255	6840	Rice - 3 kg, Dal-0.5 kg., Cash Rs. 10/- Total- Rs. 50/-
Parjanga	Kankadasoda	2	171	4973	Rice - 3 kg, Dal-0.5 kg., Cash Rs. 10/- Total- Rs. 40/-
Pallahara	Khemela	2	116	3240	Rice –5kg, Cash-Rs. 20/-** Cost = Rs. 50/-
Gania	Kishore Prasad	4	304	4361	Rice – 5 kg, Dal - 0.5 kg, Cash Rs.10/- Cost= Rs. 60/-
	Chhamundia	3	170	4872	Rice –5 kg., Dal - 0.5 kg., Cash Rs.10/- Cost = Rs.50/-
Khandapara	Banapur Sidhamula	5	192	11740	Rice - 5 kg, Dal - 200 gms*, Cash - Rs.10. Cost = Rs50/-
Narla	Gadebandha	2	105	1010	Rice –4kg, Dal - 0.5 Kg. Cash-Rs. 10 /- Cost = Rs. 50/-
Bandhugaon	Almonda	3	174	5549	Rice – 3kg, Dal - 0.5 Kg. Cash-Rs. 10/- Cost=Rs 50/-
<b>8 Blocks</b>	<b>10GPs</b>	<b>27</b>	<b>1705</b>	<b>49285</b>	

\* The village committee decided that instead of Dal 0.5 kg they can be given 0.2kg and rice quantity can be increased.

\*\* As per the decision by the Village Committee the beneficiaries were given Rs10.00 extra to purchase Dal at their own choice.

#### Physical Achievements

Under Food for Work programme following structures are under-constructions by the beneficiaries.

S I	Type of Work	Numbers Targeted	Numbers Completed	Numbers under progress
1	Pond-Excavation	9	5	4
2	Pond-Renovation	7	2	5
3	Road-New	3	3	0
4	WHS / Check dam-Construction	5	1	4
6	Canal-digging	8	1	7
7	Land Development – One acre per family	35	35	0

### Distribution of Food & Cloths

In Kaliapada village of Kishoreprasad Gram Panchayat of Gania Block in Nayagarh, 22 houses were destroyed by fire in January; 2003. The fire-victim families were also the beneficiaries planned under food for work assistance in the drought appeal and they were supported with cloths, food-items for six days and other essential commodities on an urgent basis as given below:

Rice	Dal	Salt	Match Box	Cloth	Lantern	Mat	Blanket	Kerosene
440kg	22kg.	22pkt.	22pkt.	66pc.	22pc.	22pc	22pc.	110 litres.

These families were involved in clearing the debris and reconstruction of temporary huts.

### 3.2. Assistance for Irrigation

Apart from creation of some irrigation structures under Food for work programme, in one village (Paturia) in Gania Block an irrigation canal of 850 metres' long is under construction. Around 200 acres belonging to 80 families will be brought under irrigation.

### 3.3. Drinking Water and Sanitation

#### Drinking Water

Under this programme. in six villages repair of dug wells, construction of dug wells and spring protection wells were undertaken to provide safe and sufficient drinking water to the affected population. The following activities were undertaken under this programme.

S I.	Programme Details	No. of Units Proposed	No. of Villages	Current Target	Status
1	Dug well - Repairing – Numbers	18	18	1	Completed
2	Dug well – Construction – Numbers	11	11	4	2 completed 2 continuing
3	Tube Well - Repairing – Numbers	10	10	0	Yet to begin
4	Tube Well – Construction – Numbers	39	39	0	Yet to begin
5	Spring Protection Wells – Numbers	8	8	1	Completed

### 3.4. Health & Medical Inputs

As per the Appeal, the emphasis has been on health education to prevent and minimise diseases like skin infection and gastrointestinal problems particularly among the children, old age persons, women and the disabled. Individual health check-ups were taken up in the prioritised villages and the patients were treated for common ailments.

Name of the Village	Health Camps for Treatment	Patients Treated	Awareness Meetings
Ambapalash	1	163	1
Gangadharpur	1	88	1
Tumusinga	1	239	
Harijansahi	1	167	1
Kesobhadra	1	55	1
Chidibalsa	1	56	1
Hatibindha			1
Barkotia			1
Nota	1	40	1
Kadabahali	1	60	1
Prasanachandrapur	1	35	1
Purunapani	1	35	1
<b>Total</b>	<b>10</b>	<b>938</b>	<b>11</b>

Within the reporting period 10 health camps in 10 villages and 11 Awareness meeting were organised in 11 villages and in total 938 patients were treated for skin infections, gastrointestinal problems, cold, cough, malaria etc.

### 3.6. Capacity Building Programme

Training of Trainers Programme on Community Based Disaster Management was organised at Bhubaneswar from 23<sup>rd</sup> of February to 1<sup>st</sup> March, 2003 in collaboration with ODAF and Indian Red Cross Society. 15 Community Volunteers and 17 staffs from NGOs attended this training programme. The details are given below:

#### Programme Schedule of Training of Trainers on Community Based Disaster Management at Red Cross Bhawan, Bhubaneswar

Date	Topics	Resource Persons
23.02.03	Registration	
24.02.03	Inauguration & Introduction	Mr.Aurobinda Behera(IAS) Managing Director.,OSDMA,Govt. of Orissa Mr.Aditya Pattnaik,Vice-president,ODAF, Mr.Dhirendra Panda,State Co-ordinator,UELCI
	Understanding of Disaster	Prof.Sibnarayan Mishra
	Cyclone Warning and Dissemination	Mr.M.Mahapatra, Indian Metereological Department,Govt. of India
	Drought Management	Mr. Prafulla Rath,Care(Orissa) India
25.02.03	Differential of Vulnerability, Risk,Hazard (GROUP WORK)	Mr. Ashok Samantray Indian Red Cross Society,Orissa
	Community Health and Sanitation	Dr.Mamata Patnaik
	Leadership during Disaster	Mr.Chakradhara Rout
	Volunteerism and Disaster(Relief) Management	Mr.Santosh Kumar Nanda, Indian Red Cross Society,Orissa
26.02.03	Community Contingency Plan (Theory and Practical)	Prof. Sibnarayan Mishra
27.02.03	Field Work on Community Contingency Planning at Tentulia Cyclone Shelter, Puri	Prof. Sibnarayan Mishra and Tentulia Village Disaster Management Team
28.02.03	Search And Rescue(SAR)	Mr.Satyabrata Padhi and Team, Civil Defence Wing, Ministry of Home Affairs,Govt. of India
	Community Based Disaster Preparedness(CBDP)	Mr.H.Harichandan, Spanish Red Cross Society
01.03.03	First Aid	Dr.Sanjeeb Kumar Kar, St.Johns Ambulance Association
	Concluding Session	Mr.Rabi Ratna Dash(IAS), Secretary,Indian Red Cross Society,Orissa

#### List of Participants of the Trainers of Training on CBDM programme

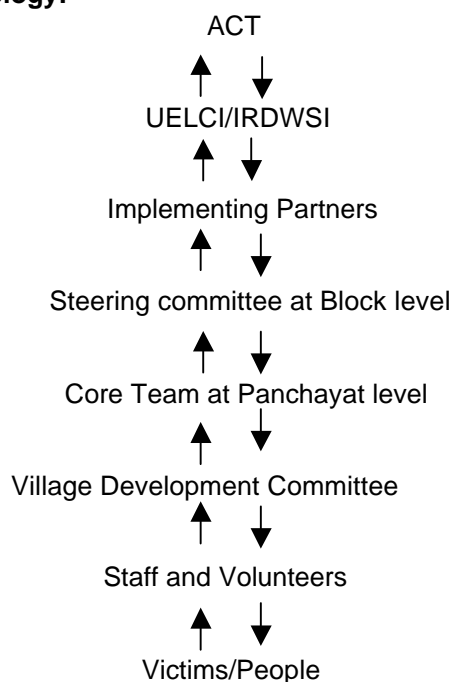
Sl. No.	Name of the Participants	Sex	Profile
1	Dwarika Dash	Male	Staff,CPSW,Khandapara Block(Central Orissa)
2	Ajay Dwibedy	Male	Staff,ACM,Erasama Block(Coastal Orissa)
3	Laxmidhara Behera	Male	Community Volunteer,Kaptipada Block(North Orissa)
4	Dayadhan Suna	Male	Staff,WIDA,Dasamantapur Block(South Orissa)
5	Laxmidhara Panda	Male	Staff,PIPAR,Kamakhya Nagar Block(North Orissa)
6	Ramaswami Pidika	Male	Community Volunteer,Bandhugaon Block(South Orissa)
7	Kumuti Khillo	Male	Community Volunteer,Semiliguda Block(South Orissa)
8	Singru Hontal	Male	Community Volunteer,Pottangi Block(South Orissa)
9	Hiraka Kurmaya	Male	Community Volunteer,Bandhugaon Block(South Orissa)
10	Shyam Manding	Male	Staff,RAD,Bandhugaon Block (South Orissa)
11	Ashok Kumar Sahoo	Male	Community Volunteer,Jharigaon Block(South Orissa)

Sl. No.	Name of the Participants	Sex	Profile
12	Nilamani Pradhan	Male	Community Volunteer, Kamakhya Nagar Block(North Orissa)
13	Bhabagrahi Panda	Male	Staff, Seva Bharati, Gania Block(Central Orissa)
14	Kumud Behera	Male	Community Volunteer, Gania Block(Central Orissa)
15	Birabikram Mohanty	Male	Staff, SVK, Gania Block(Central Orissa)
16	Sri Peter Mandal	Male	Staff, SEDP, Narla Block(South Orissa)
17	Bhuban Bag	Male	Community Volunteer, Lanjigarh Block(South Orissa)
18	Sidhartha Das	Male	Staff, ODAF, Bhubaneswar(Coastal Orissa)
19	Lokanath Pradhan	Male	Community Volunteer, Pallahara Block(North Orissa)
20	Jandak Singh	Male	Community Volunteer, Kaptipada Block(North Orissa)
21	Kausalya Khilo	Female	Community Volunteer, Semiliguda Block(South Orissa)
22	Jamuna Pangi	Female	Community Volunteer, Semiliguda Block(South Orissa)
23	Asia Kanhar	Male	Community Volunteer, Phiringia Block(Central Orissa)
24	Antaryami Mishra	Male	Community Volunteer, Gania Block(Central Orissa)
25	Dr. Krushna Mohan Patra	Male	Staff, SEVA BHARATI, Tumudibandha Block(Central Orissa)
26	Buli Maharana	Female	Staff, TSRD, Phiringia Block(Central Orissa)
27	Srimati Kamila	Female	Staff, ACM, Kaptipada Block(North Orissa)
28	Sabita Rani Nayak	Female	Staff, SEDP, Pallahara Block(North Orissa)
29	Dhirendra Panda	Male	Staff, UELCI, Bhubaneswar(Coastal Orissa)
30	Santosh Patnaik	Male	Staff, ODAF, Bhubaneswar(Coastal Orissa)
31	Niranjan Moahanty	Male	Staff, CPSW, Erasama Block(Coastal Orissa)
32	Sanjukta Tripathy	Female	Staff, PIPAR, Gandia Block(North Orissa)

#### 4. DESCRIPTION OF IMPLEMENTATION METHODOLOGY

The methodology described in the proposal is followed during implementation of programme.

##### Process and Methodology:



The steering committee (in some cases the core team at Panchayat level) provides the guidance and advice while the Panchayat level committee supervises and observes carefully the implementation of the programme.

Through the village committees, the beneficiaries are identified and the distribution, storage of the materials are done. Apart from the above, the local volunteers, youth clubs were identified and they were involved in the programme for effective implementation.

### **Selection of Beneficiaries:**

The following criteria were used for selection of the beneficiaries:

- Marginal and Small Farmers (Poor)
- Land less and daily wage labourers
- Dalits and Adivasis.
- Aged, Widow, Physically handicapped, Orphan, Destitute

### **Number and type of Staff/Volunteers**

For the reporting period following number of staffs/volunteers were engaged by the implementing NGOs to carry out the programme.

<b>Staff Details</b>	<b>SB</b>	<b>CPSW</b>	<b>PIPAR</b>	<b>ACM</b>	<b>SEDP</b>	<b>TSRD</b>	<b>RAD</b>	<b>SVK</b>	<b>UELCl</b>	<b>Total</b>
Central									2	2
Staffs	2	1	1	1	2	1	1	1	0	10
Volunteers	4	4	2	4	4	2	3	3	0	26
<b>Total</b>	<b>6</b>	<b>5</b>	<b>3</b>	<b>5</b>	<b>6</b>	<b>3</b>	<b>4</b>	<b>4</b>	<b>2</b>	<b>38</b>

One full time person has been appointed as the State Coordinator based at State Co-ordination Office in Bhubaneswar and another Staff at the Central Coordination Office at Visakhapatnam.

### **Procurement Details**

All the purchases were done under the approval of the UELCl based on the cash flow and action plan. At each Field level Procurement, the representatives of village development committee, concerned NGO's representative, carries all the procurement, distribution and storage activities. Materials were purchased from the market based on the availability of the materials, transportation facility and price comparative analysis.

## **5. IMPACT ANALYSIS**

- In 27 villages 1705 families were covered under food for work programme and in total 49285 human days were created.
- Under Food for Work Programme community infrastructures were created such as 5 new ponds, 2 old ponds renovated, one check-dam, one canal, three-road construction, and 35 acres of land development.
- 2 dug wells and one spring protection wells were constructed and one dug well was repaired.
- In 12 villages, 10 health camps, 11 awareness meetings were organised and 938 patients were attended to.

## **6. PROJECT ADMINISTRATION, FINANCE, and MONITORING, REPORTING**

### **Project Administration**

IRDWSI/UELCl is responsible for general project administration. The field team headed by the Chief functionaries of local partners carry out the implementation of the field level activities. The role of Chief Functionaries is being co-ordinated by the UELCl Co-ordinator. The Field Team takes Field level liaison with local authorities and other related bodies.

### **Project Finance Management and Controls**

The financial controlling system built in at the IRDWSI/UELCl (Ref. ASIN-95, ASIN-12 and ASIN-13) level is being followed. The IRDWSI/UELCl is the recipient of the funds in their FCRA account. Conceptual orientation and training, calling in the funds, channelling and management of the funds,

consolidating the narrative reports and financial reporting is being done by IRDWSI/UELCI. So far we have received 1,00,000 Euro in November 2002 and 40,000 Euro in December 2002 from ACT amounting to Rs 69,00,000.00 out of our appeal Rs. 3,66,25,260.00 which is 18.83 % was covered. Based on the grants received from ACT the programmes are prioritised and implemented. As we do not know whether the money will be available through ACT in the near future an amount of Rs.18,00,000 Lakhs ( 36,000 Euro) is kept aside for seed assistance for cultivation in the coming months.

### **Project Monitoring Procedures**

IRDWSI takes the general responsibility for administration, finance monitoring, and reporting involving the local implementing partners. The Co-ordinator, UELCI is co-ordinating the programme with support of the Field Teams. The Field Teams are implementing field level activities at grassroots level in close co-operation with the victims.

The teams send reports concerning aspects of material usage, finance utility in the field, statistical data on the activities and overall progress of the Programme to UELCI/IRDWSI on monthly basis and in turn, the UELCI/IRDWSI consolidates these reports and sends them to ACT immediately.

### **COORDINATION**

#### **ACT, Government, International Agencies, Other NGOs**

UELCI is in continuous touch with the implementing partners. Each month UELCI State Co-ordinator visits each of the operational areas once, at least. Weekly co-ordination meetings are organised at the field level. The implementing partners have their own co-ordination procedures and systems as they have been already doing.

At state level UELCI is in regular interactions with Orissa State Disaster Management Agency (OSDMA) an agency of Govt. of Orissa, Office of Special Relief Commissioner of Orissa Government and the NGO forum called the Orissa Disaster Mitigation Mission (ODMM).

ODMM, OSDMA & others had organised a Consultation Workshop to review the Orissa Relief Code in 3<sup>rd</sup> Week January 03. UELCI State Co-ordinator had participated in it and shared on UELCI's observations on Drought in Orissa and the relevance for an amendment to the Relief Code. The UELCI representative was selected as a member to the NGO Working Group to draft recommendations for the Amendment of Orissa Relief Code.

### **Conclusion**

We are thankful to ACT for supporting the current activities and helping to provide some employment to the extremely needy families in the proposed areas. We are also preparing an financial update as of 31<sup>st</sup> March 2003 and later we will be sharing the same to ACT.

**William Stanley**  
**IRDWSI/UELCI**  
**15.04.2003**

**Encl: Activity Photos See Annexure 2.**